

# **LM-XX37-26 Touch Monitor User Manual**

**One World Touch, LLC**

Please retain this manual for future reference

# Table of Contents

Chapter 1 Introduction .....	3
Chapter 2 Product Views .....	4
2.1 Front View .....	4
2.2 Back View .....	4
Chapter 3 Getting Started .....	4
3.1 Connect the Touch Screen Monitor .....	4
3.2 Touch Screen Driver Installation .....	5
3.3 Adjusting the Monitor.....	7
Chapter 4 Troubleshooting .....	10
Chapter 5 Warranty Policy .....	11
Chapter 6 Contact information .....	12

## **Chapter 1 - Introduction**

Thank you for your purchase of this touch screen LCD monitor. Please read this user manual before using your product and refer to this or a professional technician for any questions related to the product.

### **Disclaimer**

1. This product has been tested in accordance with the provisions of FCC Rules Part 15 and complied with Class B digital device regulations. The purpose of these provisions is to provide reasonable protection against harmful interference in domestic use.
2. This product may not be fully adaptable with other products and not suited for other environments which aren't mentioned in this user manual and related product material. Therefore, the warranty will only cover issues with the product alone.
3. Because of technical or other external factors which leads to changes on product design and specifications, One World Touch, LLC will not give a separate notice.

### **Warnings and Precautions**

This LCD monitor operates under high voltage. In order to avoid an electric shock do not open the cabinet. Repair should be entrusted to professionals.

Incorrect methods of operation may cause electric shock or fire incidents. To ensure your safety and the lifespan of the display, please read the following instructions carefully before using this display. All operation must comply with all instructions.

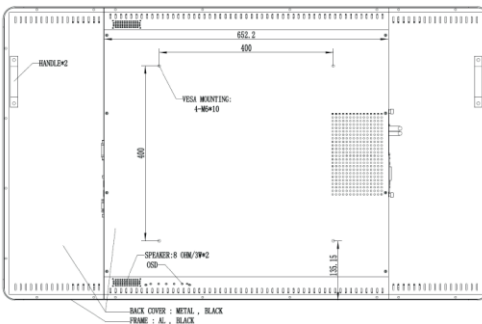
- Do not use any accessory equipment which is not recommended by the manufacturer.
- Please use the monitor with the supplied power adapter. Also, please check the AC power adapter specifications. If you are not sure whether it works with your regional electrical supply, contact your distributor or the manufacturer.
- Do not try to manually fix or alter the supplied power adapter. A damaged power cord can cause electric shock or fire.
- Do not try to repair the monitor without professional guidance. The internal high voltage could result in injury to the human body or the monitor itself. Be sure the monitor is repaired or maintained by a professional technician.
- Do not attempt any actions which conflict with this manual. Improper adjustment of components, which hasn't been mentioned in the instructions, could damage the monitor.
- Clean the monitor before plugging in the power. Use a slightly damp cloth to clean the monitor and don't use liquid cleaning detergent or spray cleaner. Unplug the power if the monitor hasn't been used for a long time.

## Chapter 2 – Product Views

### 2.1 Front View



### 2.2 Back View



## Chapter 3 - Getting Started

### 3.1 Connect the Touch Screen Monitor

- Ensure that the host device connected to the touch monitor is turned off.
- Connect one end of the signal cable (VGA or DVI or HDMI) to the touch monitor and the other end is connected to the host device.
- Connect the USB cables “B” connector to the touch monitor and the “A” connector to the host device.
- If you are using audio, connect the audio cable to the touch displays "Audio Input", connection and the other end to your host device.
- Connect the power adapter to the touch monitor and the other end to the electrical supply socket.
- Press the power button to turn on the touch monitor. (Usually set to power on mode).

## 3.2 Touch Screen Driver Installation

In most cases a touch screen driver is not needed, however, if a driver is needed, it can be installed from the supplied CD-ROM.

### 3.2.1 Touch Screen User Modes:

- **Mouse Mode**  
Supported by Windows XP, Windows 2000, Windows 7(32bit/64bit), Windows 8(32bit/64bit), Windows 8.1(32bit/64bit), Windows 10 (32bit/64bit), Ubuntu 10.04, Ubuntu 11.04, RHEL 6.0
- **Digitizer Mode**  
Support Windows7 (32bit/64bit), Windows 8(32bit/64bit), Windows 8.1(32bit/64bit), Ubuntu 12.04.3, Ubuntu 12.04.4, Ubuntu 13.04, Ubuntu 13.10, Ubuntu 14.04, Kubuntu13.10, Android\_x86 4.4.2,

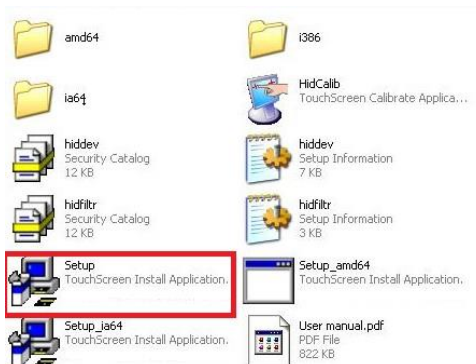
### 3.2.2 Driver Installation

#### 3.2.2.1 OS Supported Touch Functionality (Driver Not Needed)

If the touch screen monitor is compatible with the host device, USB touch functions can be used directly without the need for installing drivers (i.e. Windows 7 / Windows 8 / Windows 8.1/ Windows 10 / Ubuntu14.04)

#### 3.2.3 Driver Installation (for Windows XP only)

- **Installation steps**
  - 1) Double click open DRV\_EN\_Win\_1640D folder
  - 2) Double click run Setup. Exe file



3) Follow the screen prompts to complete the driver installation.



- Calibrate the touch screen  
Select HID Touch menu in the Start menu, click on the submenu "Calibration".



- Touch the red cross on the screen



- Click the “OK” button to complete the calibration

### 3.3 Adjusting the Monitor

Generally, you will not need to adjust the monitors display settings however, variations in video output and application may require adjustments to your touch monitor in order to optimize the display quality. For best performance please set the host device resolution and frequency to match the touch monitor. Operating in other resolutions may degrade the video performance.



#### **OSD button function description:**

- POWER: Power switch
- MENU: Display menu / OK
- RIGHT: Scroll thru the OSD menu options upwards / increase the OSD option value / increase the volume
- LEFT: Scroll thru the OSD menu option downward / decrease the OSD option value / decrease the volume
- Auto: Automatically optimizes and adjusts the screen settings (this function’s

only when the VGA input is selected)

### **OSD Menu function description:**

- **Image Adjustment**
  - **Brightness**  
Adjusts the overall screen brightness.
  - **Contrast**  
Adjusts the amount of difference between darkness and lightness.
  - **Gamma**  
Adjusts the gamma value.
- **Position adjustment (Only applicable for VGA input video)**
  - **Phase**  
Allows fine adjustments of the panel's pixel dot clock phase.
  - **Clock**  
Allows fine adjustment of the panel's pixel dot clock.
  - **Row position**  
Moves the image left or right on the screen
  - **Field position**  
Moves the image up or down on the screen
- **Color Adjustment**
  - **Color Temperature**  
5000K, 6500K, 7500K, 8200K, 9300K, 11500K, and User Defined
- **OSD**
  - **Horizontal Position**  
Moves the horizontal position of the OSD menu
  - **Vertical Position**  
Moves the vertical position of the OSD menu
  - **Transparency**  
OSD menu transparency setting
  - **OSD Time Out**  
Adjusts how long a period of OSD button inactivity the touch monitor will wait before closing the OSD
- **Settings**
  - **Language**  
Selects OSD display language (English, Spanish, French, German, Italian, Portuguese, Korean, Simplified Chinese)
  - **Mute**  
Volume on / off
  - **Input Signal**  
Selects the video input signal



- **Dynamic Contrast**  
On / off. This feature increases the contrast and provides a clearer more detailed image.
- **Aspect Ratio**  
Switches the scaling method between full scaling and maintain aspect ratio
- **Reset**  
Resets all settings to factory defaults
- **Information**  
Displays monitor information

## Chapter 4 - Troubleshooting

Failure	Possible Reasons
Power cannot be turned on	<ul style="list-style-type: none"> <li>• Make sure the power button is in the on (ON) position, the power cord is properly connected to a grounded power outlet and the power adapter is connected to the monitor.</li> </ul>
No image	<ul style="list-style-type: none"> <li>• Check for power adapter connection to AC supply as well as monitor. Make sure monitor is switched on.</li> <li>• Check if the video signal cable is properly connected (Using the D-SUB cable) Check the D-SUB cable connection (Using the DVI cable) Check the DVI cable connection (Using the HDMI cable) Check the HDMI cable connection</li> </ul>
"Out of Range" displayed on the screen	<ul style="list-style-type: none"> <li>• Host device video output is configured to a resolution that is not supported by the monitor</li> </ul>
Image movement, flickers, or a wave pattern is present in the picture	<ul style="list-style-type: none"> <li>• Electrical equipment near the monitor may cause some interference. Move the monitor as far away as possible from these devices.</li> <li>• Check the refresh rate of monitor and set it to the maximum refresh rate</li> </ul>
Picture has color defects (white does not look white)	<ul style="list-style-type: none"> <li>• Adjust user RGB color settings.</li> </ul>
Touch non-operational	<ul style="list-style-type: none"> <li>• Check that the USB cable is connected properly</li> <li>• Check if drivers are needed and/or are installed properly</li> </ul>

If the problem persists, please contact our technical support center.

## Chapter 5 – Warranty Policy

One World Touch, LLC USA warrants its hardware products to be free from manufacturing defects in materials and workmanship under normal use for a period of three (3) years from the date of purchase. One World Touch, LLC shall not be liable to honor the terms of this warranty if the product has been used in any application other than that for which it was intended, or if it has been subjected to misuse, accidental damage, modification, or improper installation procedures. Furthermore, this warranty does not cover any product that has had the serial number altered, defaced, or removed. One World Touch, LLC shall, at its option, repair or replace any product found defective, without charge for parts or labor. Repaired or replaced equipment and parts supplied under this warranty shall be covered only by the unexpired portion of the warranty.

**This limited hardware warranty covers defects in materials and workmanship in your One World Touch, LLC hardware products. This limited warranty does not cover:**

- Software, including the operating system and software added to your One World Touch, LLC product after it was originally received.
- Non, One World Touch, LLC branded products and accessories
- Problems that result from:
  - Damages caused by misuse, abuse, accidents, fire, theft, disappearance, misplacement, fluctuations and power surges, connections to improper voltage or incorrect electrical line voltage, viruses, malware, reckless, willful, or intentional conduct.
  - Damage caused by a product or part that has been modified to alter functionality or capability without the written permission of One World Touch, LLC.
  - Servicing not authorized by One World Touch, LLC.
  - Usage that is not in accordance with product instructions.
  - Failure to follow the product instructions or failure to perform preventive maintenance.
  - Products with missing or altered service tags or serial numbers
  - Products for which One World Touch, LLC has not received payment

If you have any suggestions or need help with One World Touch, LLC touch screen products, please contact our service department.

## Chapter 6 – Contact Information

One World Touch, LLC  
3003 Howard Lane  
Austin, TX 78728

Customer service department:

Tel: 888-928-2929

Fax: 512-341-9301

E-mail: [support@oneworldtouch.com](mailto:support@oneworldtouch.com)

[www.oneworldtouch.com](http://www.oneworldtouch.com)